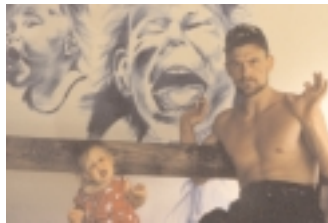


FOR IMMEDIATE RELEASE

PRESS RELEASE

## MAPPING PERCEPTION

[www.mappingperception.org.uk](http://www.mappingperception.org.uk)**UNIQUE SCIENCE/ART COLLABORATION SEEKS TO  
BREAK OUT OF THE 'CASTLE OF THE FIVE SENSES'**

*The Castle of the Five Senses – seeing, hearing, touch, taste and smell – represents the limits of normal human perception.*

**PROBOSCIS PRESENTS A UNIQUE FILM AND INSTALLATION –  
THE RESULT OF OVER FOUR YEARS' COLLABORATION BETWEEN  
AN AWARD WINNING FILMMAKER, A CURATOR AND A NEUROPHYSIOLOGIST**

MAPPING PERCEPTION examines the limits of human perception through an investigation of impaired brain function, making visible the connections between scientific and artistic explorations of the human condition, probing the thin membrane between the able and the disabled. Scientists and artists share an unquenchable curiosity and desire to question the world in which we live. Their methods, processes and outcomes may be worlds apart but their journeys can intertwine in united voyages of discovery. Mapping Perception is just such an experimental entanglement – the sum of four years of collaborative thinking, arguing, discussing, sharing and creating, born of a shared passion, a common interest – perception.

At the heart of the project is Eden, Andrew's daughter. She was born at Guy's Hospital, London, in 1988 with a rare genetic disorder – Joubert Syndrome, causing cerebellar vermis hypoplasia and several other neurological complications. Eden participates in the project as both a catalyst and a cypher for a more general investigation into how we see the world and perceive difference.

Originally conceived in early 1998, MAPPING PERCEPTION is a collaboration between **Giles Lane**, curator and producer (Proboscis), **Andrew Kötting**, the acclaimed director of *Gallivant* and *This Filthy Earth*, and **Dr Mark Lythgoe**, neurophysiologist at the Institute of Child Health, London with the participation of **Eden Kötting**.

MAPPING PERCEPTION has a series of outcomes:

- FILM** 37 minutes 35mm – premiering at **Brief Encounters Film Festival** in **November 2002**  
**EXHIBITION** Audio-visual installation – launching **8th October 2002** at  
**Cafe Gallery, Southwark Park, London SE16 2UA** until **3rd November 2002**  
**BOOK** 80pp book & CD-ROM – publication date **8th October 2002**

**MORE/...**

## FOR IMMEDIATE RELEASE

## PRESS RELEASE

### QUOTES

- *Science is the great antidote to the poison of enthusiasm and superstition.*
- *We look ahead with minds and cultures rooted in the ideas of more sluggish times.*
- *Perception is an intermediary step in information processing between sensation and cognition.*

FROM THE FILM — ATTRIBUTE TO KOTTING & LYTHGOE

- *MAPPING PERCEPTION is a humanistic project about changing the way we look at the world and each other. Its not just about making a work of art, but about challenging our perceptions. It also encourages artists and scientists to imagine how their visions can be translated beyond their disciplines.*

GILES LANE, CURATOR/PRODUCER, JULY 2002

### BIOGRAPHIES

#### ANDREW KOTTING, artist

Andrew is an artist, filmmaker, jack of all trades and master of none. His recent feature film, *This Filthy Earth*, was released in November 2001, his first feature, *Gallivant*, was released in 1997. He is also the director of numerous shorts including: *Smart Alek*, *Kingdom Protista*, *Klipperty Klopp* & *Hoi Polloi*.

#### EDEN KOTTING, artist/performer

Eden lives with her father Andrew and her mother Leila on the Pepys Estate, South London, and often calls on Mark for advice with how to deal with them.

#### GILES LANE, curator/producer

Giles is a curator, producer and researcher and is Co-Director of Proboscis, where he leads the SoMa (social matrices) think tank.

#### DR MARK LYTHGOE, neurophysiologist

Mark is a neurophysiologist using MRI scanners to investigate childhood illnesses at the Institute of Child Health and Great Ormond Street Hospital.

#### TOBY MCMILLAN, sound designer

Toby designed the sound and music for both the film and the installation — manipulating sound samples taken from MRI equipment used to image the brain.

### FUNDING CREDITS

MAPPING PERCEPTION has been generously funded by:

**Sciart Consortium, Production Award Winner 2000**  
**Film Council [National Lottery Award]**  
**London Production Fund**  
**Calouste Gulbenkian Foundation**  
**South East Arts**



The project has also been generously supported from its earliest beginnings by the **Royal College of Surgeons Unit of Biophysics** at the **Institute of Child Health/Great Ormond Street Hospital**.



**QUICKTIME EXCERPTS FROM THE INSTALLATION AND DIGITAL STILLS ARE AVAILABLE ON REQUEST**

**— ENDS —**

For further information please contact **Catherine Williams** on:

Tel: **07771 80 35 62**

Fax: **07031 151 738**

Email: **catherine@proboscis.org.uk**

Proboscis is a non profit making research and curatorial organisation — researching, developing and facilitating innovation in creative practices.

2 Ormonde Mansions 100A Southampton Row London WC1B 4BJ UK

T: 07711 069 569 F: 07031 151 738 E: info@proboscis.org.uk W: www.proboscis.org.uk